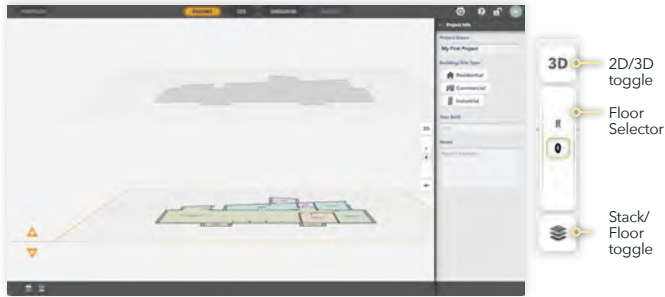


Canvas: 2D stack view, Project panel open (select/add/delete floors)



Canvas: 2D floor view, editable, floor 0 = ground floor



Canvas: 3D stack view, editable, floor 0 and roof



Back to the **Portfolio** web application

Canvas 3D floor view, roof off

Floor picker

To **Insights™** to explore Quantum™ data

Project lock status

Help menu

Library tabs

Asset type

Asset

Library panel

Click to open/close panels

Building toolbar

Home View compass

Add Delete (floor)

Floor/Zone panel

Inspector panel

**Canvas**  
3D Floor Home view, roof off

**Environment\* (site)**  
Other buildings  
Shadows

**Building**  
Roof  
Floor plan

**View toolbar expanded**  
(toggles: on/off)

HUD\* (Head up display)  
Dimensions  
Ortho/ Perspective  
Sensors  
Trees/Landscaping

**Key to button states**  
Note that for this version, some tools are not implemented and are disabled.

Disabled On Off

**Library panel**  
ASSETS  
DEVICES  
DIGITAL TWINS

**APPLIANCES**  
Computer, Dishwasher, Electric Range, Electric Heater, Fax, Fan, Freezer, Fridge/Freezer, Fridge, Hand Dryer, Laptop, Microwave, Photocopier, Printer, Scanner, Television, Tumble Dryer, Vending Machine, Washing Machine, Water Cooler, Water Heater

**CABINETS**  
**CHAIRS**  
**TABLES**

**Magic Wand**  
RECENTS  
Library items  
Rectangle  
Stamp  
Polyline  
Polygon\*

**Zone (drawing tool)**  
Rectangle Zone  
Polygon Zone  
Curved Zone

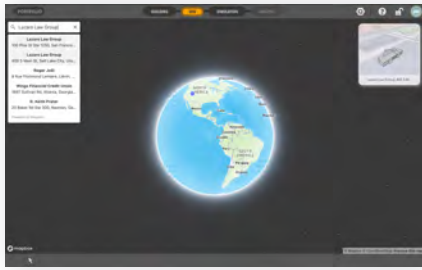
**Building toolbar**  
Click to select a tool, click and hold for options.  
Select/Move, Draw Vertex, Window, Roof, Concrete\*, Door, Wall/ Columns, Dimension, Select floorplan image, Copy Up/Down, Delete

**Canvas toolbar**  
Floor picker  
2D/3D toggle (2D)  
Floor selector (0)  
Stack/single floor toggle  
Home  
View compass

**Annotations on 3D Model:**  
2.154 m  
1.389 m

**\*Tools coming soon**  
These tools are currently in development.

Site: World map view



If project has a location, click the **Switcher** panel. If not, enter an address, then click the location on the globe.

Site: Region Selection view (default area)



Drag the selection circle to expand the region included. Click the **Switcher** panel to view building in the site.

Site: 3D Building view, roof on



Zoom/rotate to change your view of the site. Select building to reposition/rotate. Click **Date and Time** for Sun Path view.

Site: Sun Path view



Drag the date and time slider to view sun and shadows for the site location by date and time.

**Site map**  
3D Building view, zoomed in, roof off

**Date and Time**  
Click to view Sun Path

**Date and Time**  
Drag for date and time

**Switcher**  
Toggle between 3D site/building and Region Selection views

**Site view selector**

- Global
- City
- Building

**Select/Move**

**Ground smash area**  
Adjust size to increase or decrease the area cleared around building

**Rotate/Move**  
Reposition building in site

Simulation: Starting view, roof off



After setting your building in a site, in Simulation mode set simulation parameters, click **Start** button.

Simulation: Environment, outdoor temp at 9:00 AM



Environment drawer shows outdoor air temperature.

Simulation: Environment, outdoor temp at 9:00 PM



Drag **Slider** or click **Play** to view simulation over time.

Simulation: Floor, roof off, view of zone temperatures



Click **Building** drawer to view zone temperatures.

Simulation thermal view  
3D building, zoomed in, roof off

**Thermal simulation**

- Drag to set start date (current year)
- Set time range
- Set warmup interval (current year)
- Location weather source: Source is automatically set to the closest station (note that only U.S. and Canadian sources are available for this release).

**Temperature key (Celsius)**

**Zone color (average temperature)**

**Results drawers**

- Building open with zones (scroller)

**Simulation Results panel**

**Setup panel**

- Start simulation
- Play simulation animation
- Timeline slider

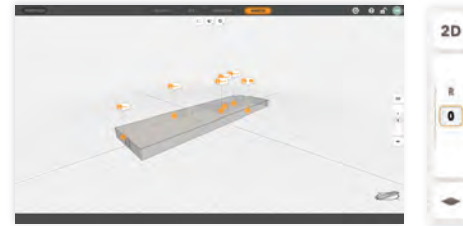
Start here ➤

Portfolio web app: Shared organization view



To open your deployed digital twin, select it, then click the Building Studio™ icon.

Analysis: Deployed project, 3D floor view



Select a sensor billboard to open Data Analysis panel.

**Back to the Portfolio web application**

**Sensor data view**  
3D floor view, zoomed in canvas

**To Insights™**

**Deployed project is locked**

**Help menu**  
PDF QUICK REF  
FORUM  
SUPPORT HOME

**Sensor billboard**  
To select a sensor, click a billboard or select the sensor in the Data drawer

**Floor picker**

**2D/3D toggle**

**Floor selector**

**Stack/single floor toggle**

**Toggle split or full graph views**

**Timeline slider**  
shows selected time

**Selected sensor**

**Data drawers**  
Expand, close, scroll to see other data

**Data graph**

**Selected sensor data**

**Play**

**Select interval**  
(day, week, & more)

**Data Analysis panel**

**Selected interval**  
(drag left/right edges to resize, slide to change position)

**Data Selection panel**

**Reset**

**Download (.CSV)**